

BIRGIT

Spajanje podataka s različitim granicama određivanja
Travanj 2025. V2.0



Sufinancira
Europska unija

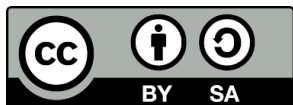
Spajanje podataka s različitim razinama detalja LOD

vlado.cetl@unin.hr

sanja.samanovic@unin.hr

danko.markovinovic@unin.hr

olga.bjelotomic.orsulic@unin.hr

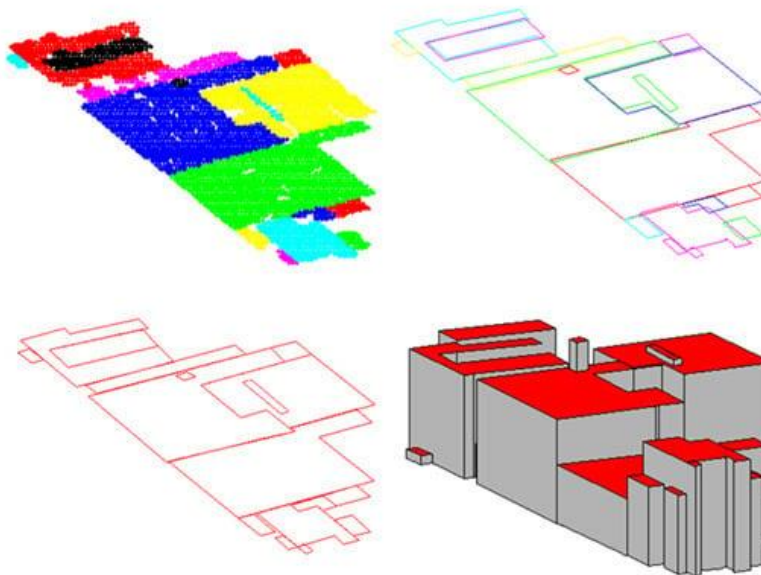


Ishodi učenja

- Na kraju ovog modula od sudionika se očekuje da će moći
 - Kombinirajte 3D geoprostorne podatke s različitim tipovima geometrije
 - Tumačenje različitih razina detalja LOD

Cilj je kombinirati i vizualizirati različite izvore podataka

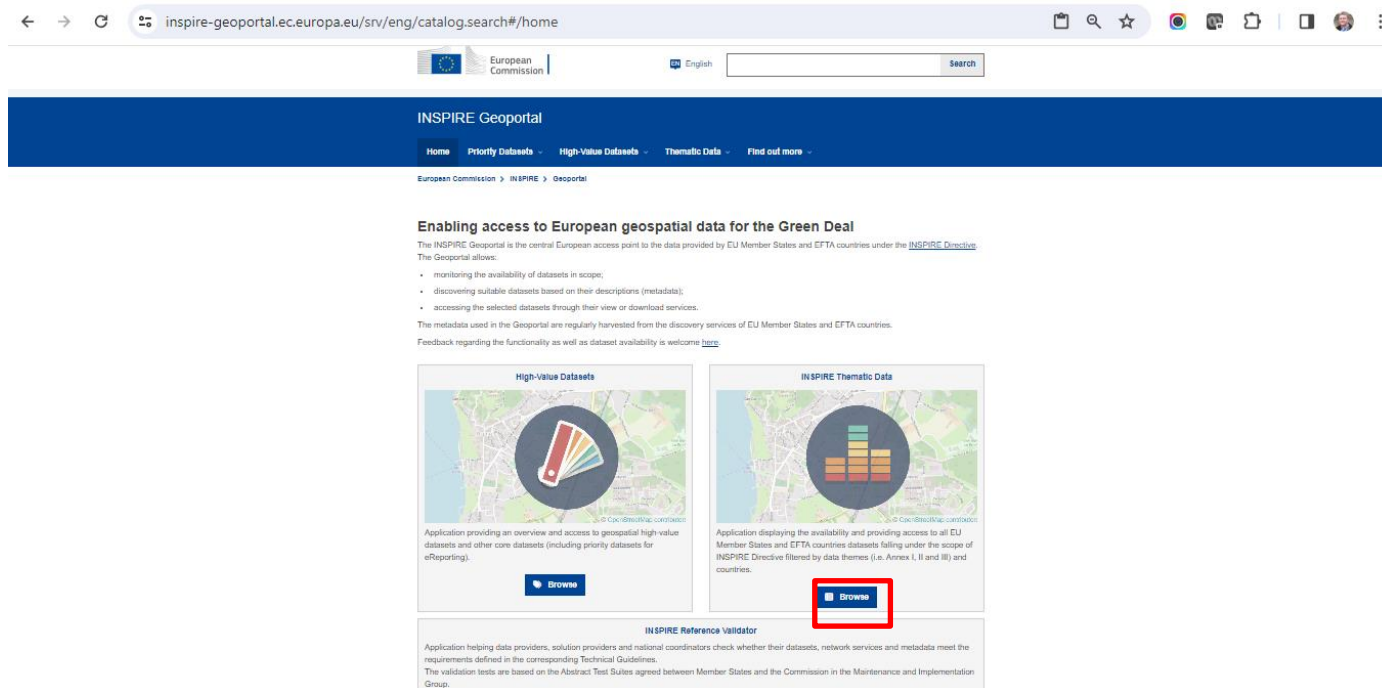
- Različite geometrije i različite granice određivanja (tj. LOD0 i LOD1)



- Izvori podataka
 - WMS, WFS, ATOM-Feed, API-ji
 - Interoperabilnost
 - Interoperabilnost prostornih podataka sposobnost je različitih sustava, formata i standarda za učinkovitu razmjenu i upotrebu prostornih podataka.



- Izvori podataka (1)



The screenshot shows the INSPIRE Geoportal website. The browser address bar displays `inspire-geoportal.ec.europa.eu/srv/eng/catalog.search#/home`. The website header includes the European Commission logo, a language selector set to "English", and a search bar. Below the header, a blue navigation bar contains the text "INSPIRE Geoportal" and a menu with links: "Home", "Priority Datasets", "High-Value Datasets", "Thematic Data", and "Find out more". A breadcrumb trail below the navigation bar reads "European Commission > INSPIRE > Geoportal".

The main content area features a section titled "Enabling access to European geospatial data for the Green Deal". Below this title, a paragraph states: "The INSPIRE Geoportal is the central European access point to the data provided by EU Member States and EFTA countries under the [INSPIRE Directive](#). The Geoportal allows:

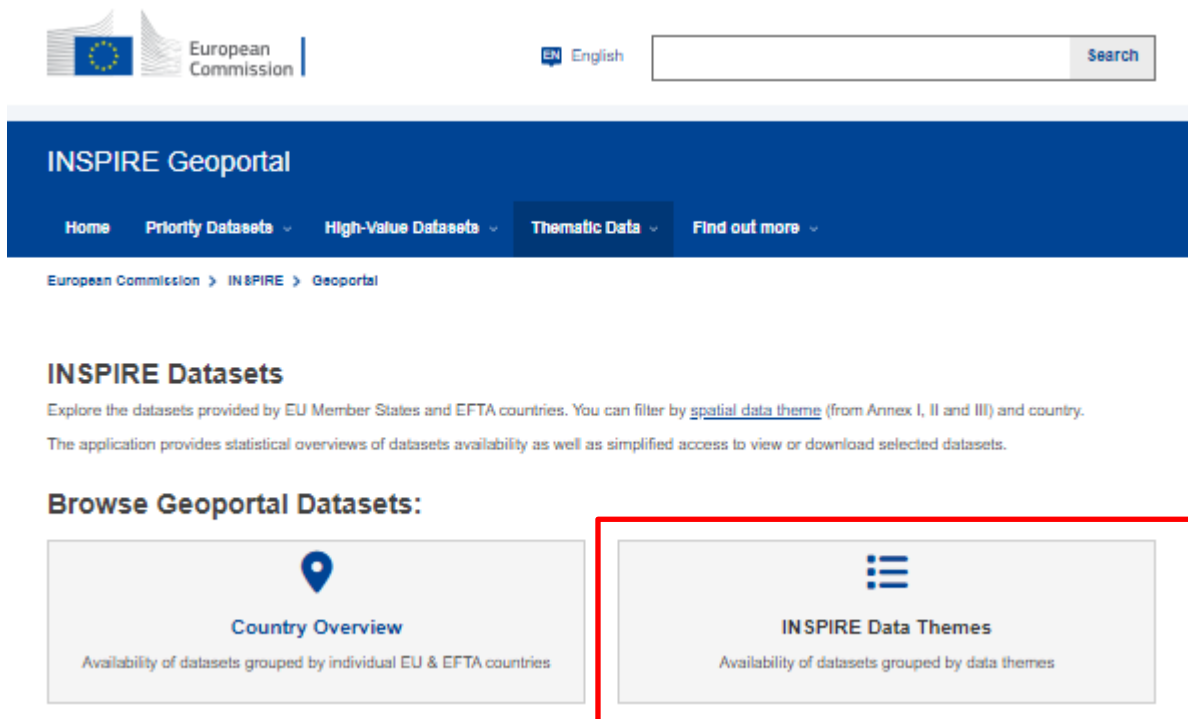
- monitoring the availability of datasets in scope;
- discovering suitable datasets based on their descriptions (metadata);
- accessing the selected datasets through their view or download services.

The metadata used in the Geoportal are regularly harvested from the discovery services of EU Member States and EFTA countries. Feedback regarding the functionality as well as dataset availability is welcome [here](#).

Below the text, there are three main sections, each with a map background and a circular icon:

- High-Value Datasets**: The icon shows a fan of colored cards. The text below reads: "Application providing an overview and access to geospatial high value datasets and other core datasets (including priority datasets for eReporting)." A blue "Browse" button is at the bottom.
- INSPIRE Thematic Data**: The icon shows a bar chart. The text below reads: "Application displaying the availability and providing access to all EU Member States and EFTA countries datasets falling under the scope of INSPIRE Directive filtered by data themes (i.e. Annex I, II and III) and countries." A blue "Browse" button is at the bottom, which is highlighted with a red rectangular box.
- INSPIRE Reference Validator**: The text below reads: "Application helping data providers, solution providers and national coordinators check whether their datasets, network services and metadata meet the requirements defined in the corresponding Technical Guidelines. The validation tests are based on the Abstract Test Suites agreed between Member States and the Commission in the Maintenance and Implementation Group."

- Izvori podataka (1)



The screenshot shows the INSPIRE Geoportal website. At the top, there is a header with the European Commission logo, a language selector set to 'EN English', and a search bar. Below the header is a blue navigation bar with the title 'INSPIRE Geoportal' and several menu items: 'Home', 'Priority Datasets', 'High-Value Datasets', 'Thematic Data', and 'Find out more'. A breadcrumb trail below the navigation bar reads 'European Commission > INSPIRE > Geoportal'. The main content area is titled 'INSPIRE Datasets' and includes a paragraph explaining that users can explore datasets provided by EU Member States and EFTA countries, filtered by spatial data theme and country. It also mentions that the application provides statistical overviews and simplified access to view or download datasets. Under the heading 'Browse Geoportal Datasets:', there are two buttons. The first button, 'Country Overview', features a location pin icon and the text 'Availability of datasets grouped by individual EU & EFTA countries'. The second button, 'INSPIRE Data Themes', features a list icon and the text 'Availability of datasets grouped by data themes'. This second button is highlighted with a red rectangular border.

European Commission | [EN English](#) [Search](#)

INSPIRE Geoportal

[Home](#) [Priority Datasets](#) [High-Value Datasets](#) [Thematic Data](#) [Find out more](#)


[European Commission](#) > [INSPIRE](#) > [Geoportal](#)

INSPIRE Datasets

Explore the datasets provided by EU Member States and EFTA countries. You can filter by [spatial data theme](#) (from Annex I, II and III) and country.


The application provides statistical overviews of datasets availability as well as simplified access to view or download selected datasets.

Browse Geoportal Datasets:



Country Overview

Availability of datasets grouped by individual EU & EFTA countries



INSPIRE Data Themes



Availability of datasets grouped by data themes

- Izvori podataka (1)

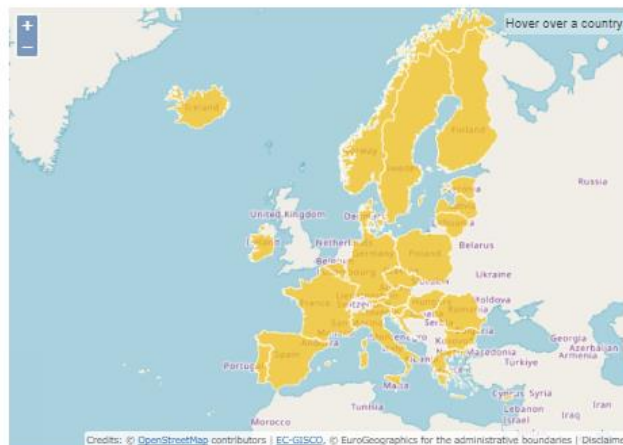
INSPIRE Data Themes

Explore all Member States' datasets by selecting a data theme.

Annex I

 Addresses Def: <i>Location of properties based on address identifiers,...</i> 186 86 83	 Administrative units Def: <i>Units of administration, dividing areas where Member...</i> 613 108 211	 Cadastral parcels Def: <i>Areas defined by cadastral registers or equivalent....</i> 196 52 54	 Geographical grid systems Def: <i>Harmonised multi-resolution grid with a common point...</i> 127 12 11
 Geographical names Def: <i>Names of areas, regions, localities, cities, suburbs,...</i>	 Hydrography Def: <i>Hydrographic elements, including marine areas and all...</i>	 Protected sites Def: <i>Area designated or managed within a framework of international...</i>	 Coordinate reference systems Def: <i>Systems for uniquely referencing spatial information...</i>

- Izvori podataka (1)



Geoportal Dataset Statistics

196
Metadata records

52
Downloadable Datasets

54
Viewable Datasets

Spatial scope coverage:

- ☐ National
☐ Regional

Select a country

Austria	5 4 2	Greece	1 1 1	Norway	3 1 3
Belgium	1 0 1	Hungary	1 1 1	Poland	1 0 1
Bulgaria	1 0 0	Iceland	2 0 0	Portugal	3 1 1
Croatia	1 0 1	Ireland	2 2 2	Romania	2 1 1
Cyprus	1 1 1	Italy	115 2 3	Slovakia	0 0 0
Czech Republic	0 0 0				
Denmark					
Estonia					
Finland					
France					
Germany					

Title	Properties
Katastarske čestice i katastarske općine INSPIRE	

- Izvori podataka (1)

Katastarske čestice i katastarske općine INSPIRE

Metadata Country: Croatia

+ Download Options

— View Options

Simple Viewer

Layer name

Service Metadata

Preview Dataset

CP.CadastralParcel

More Details

Preview Dataset

inspire-geoportal.ec.europa.eu says

Copied the url: https://api.uredjenazemlja.hr/services/inspire/cp_wms/ows?REQUEST=GetMap&SERVICE=WMS&VERSION=1.3.0&LAYERS=CP.CadastralZoning&FORMAT=image/png&CRS=EPSG:4326&BBOX=1.5646197848183165,2.302144192592216,2.607699641363861,3.836906987653693&HEIGHT=256&WIDTH=256&STYLES=

More Details

— Dataset Metadata

Resource Title

Katastarske čestice i katastarske općine INSPIRE

Resource Abstract

Ovdje WMS URL

OK

Tags

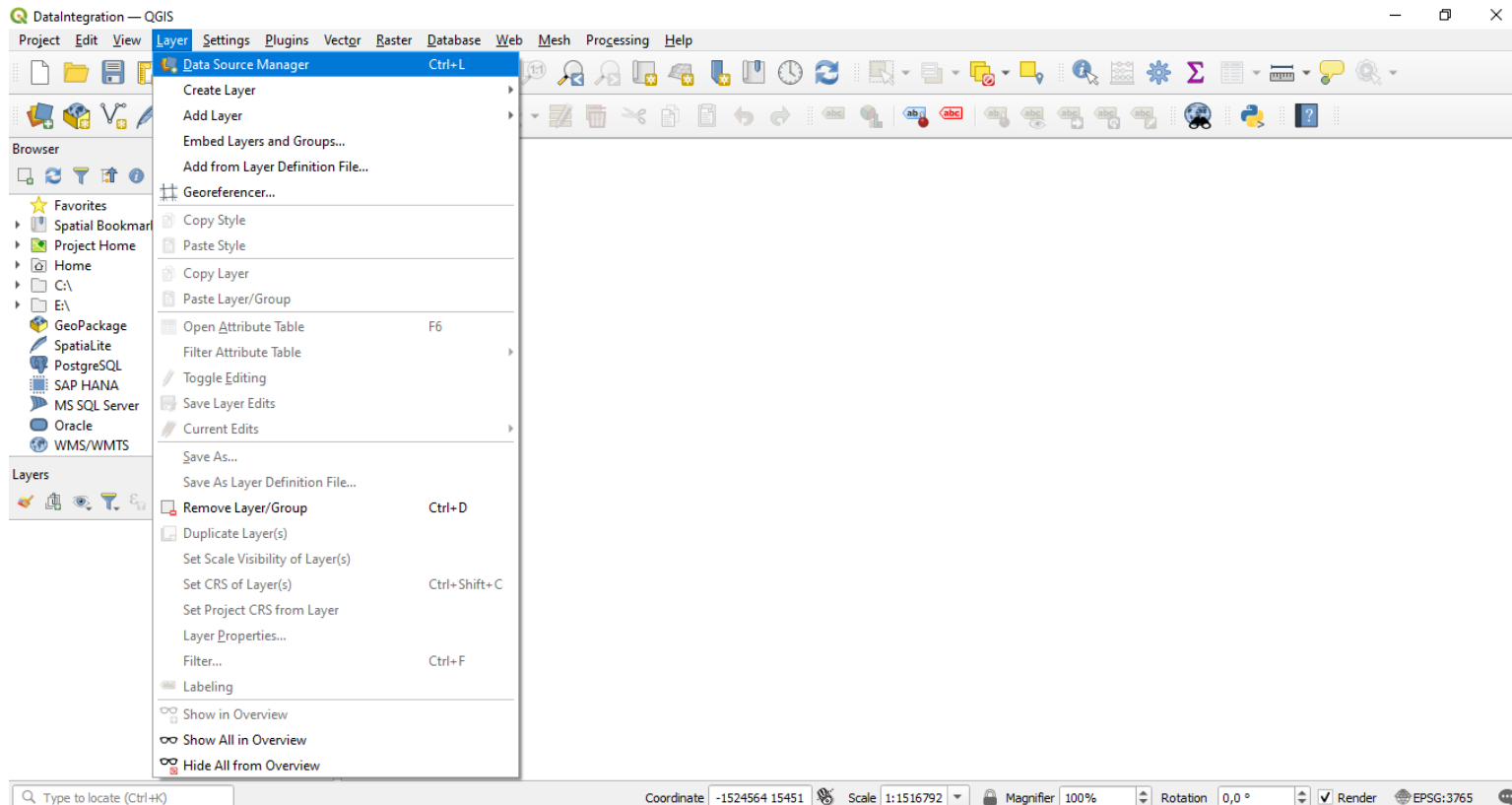
Priority Dataset

Spatial Scope

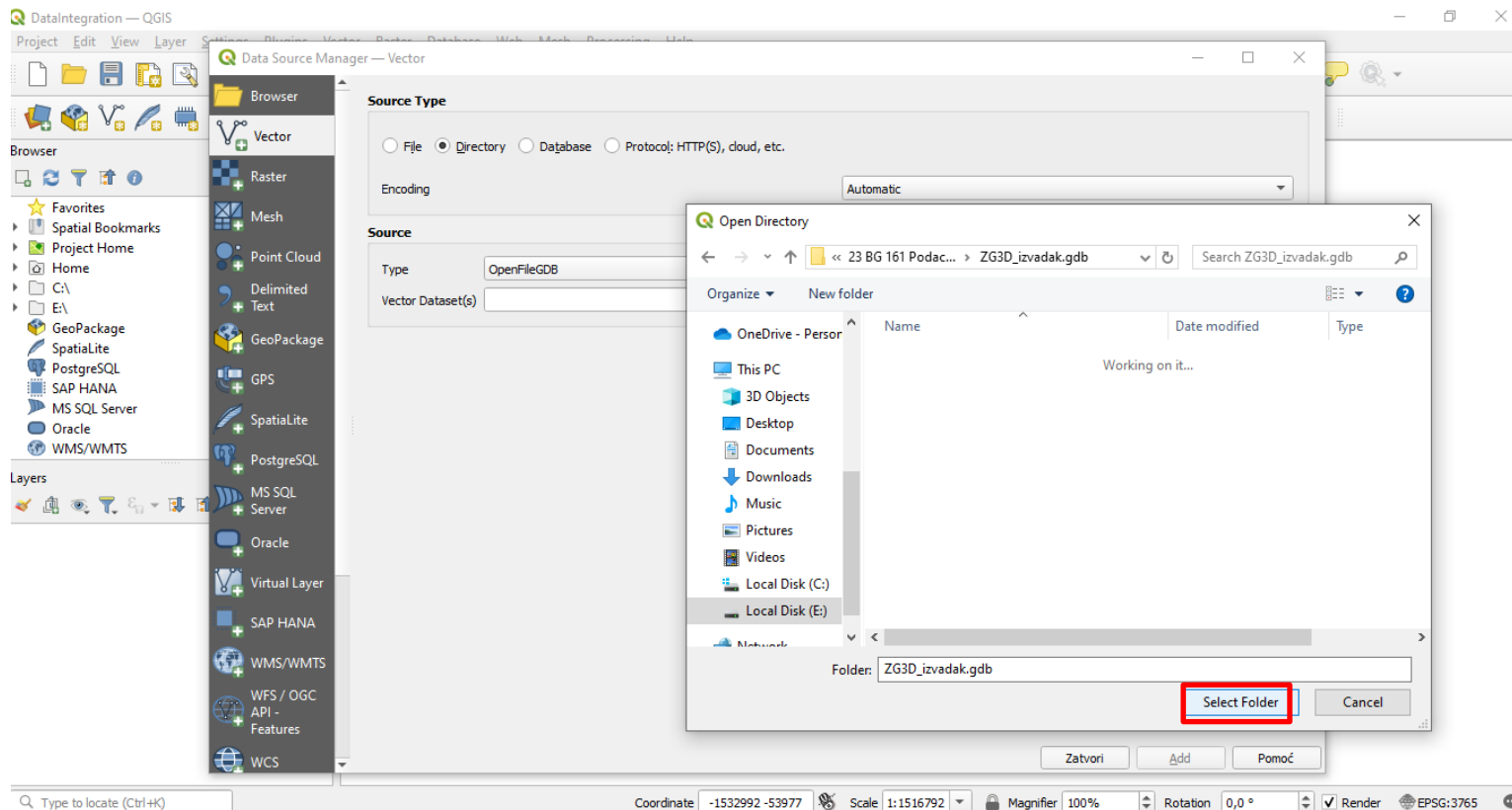
- Izvori podataka (2)
 - 3D Grad Zagreb (dio grada)



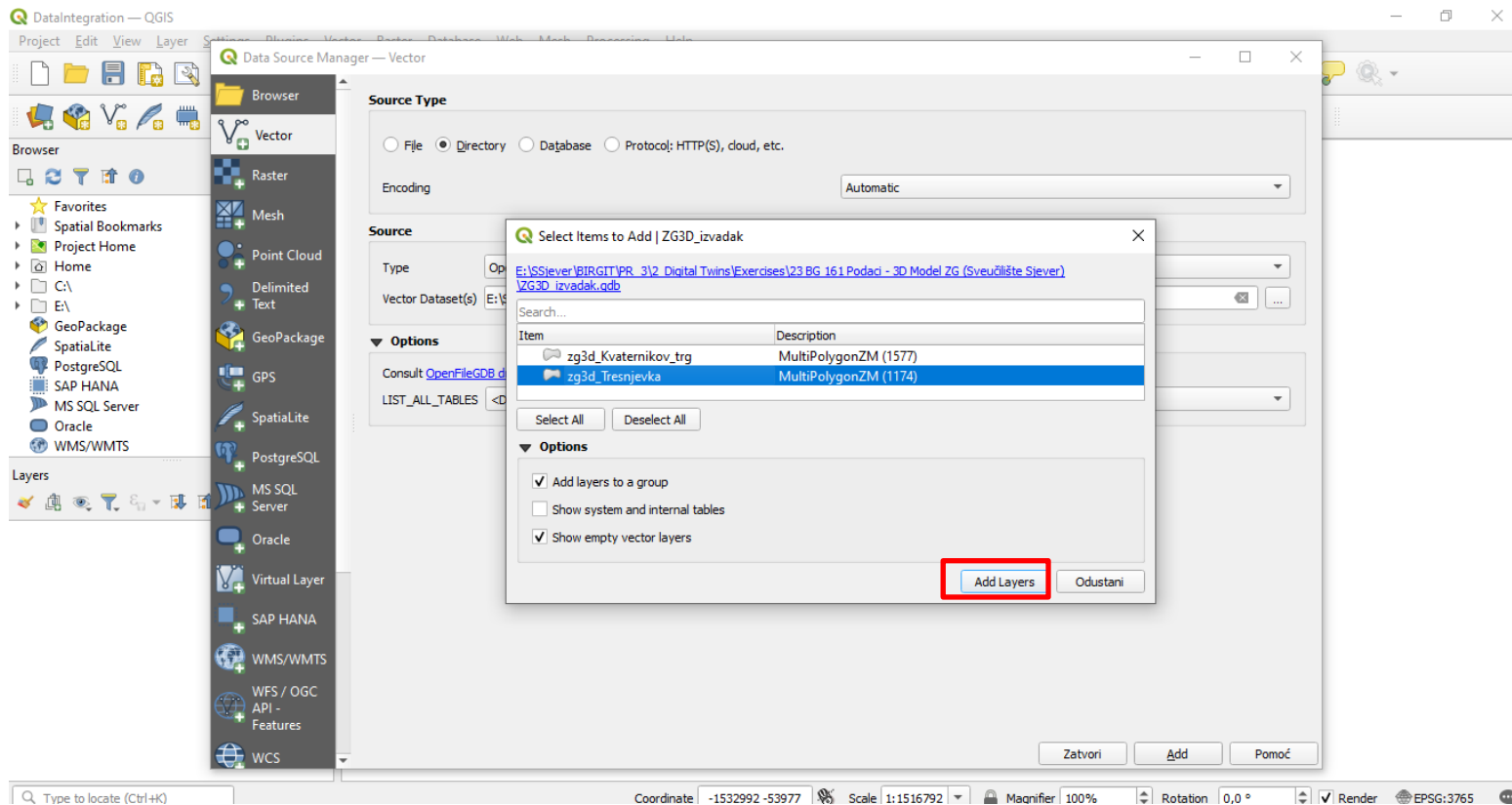
- Integracija podataka (QGIS)



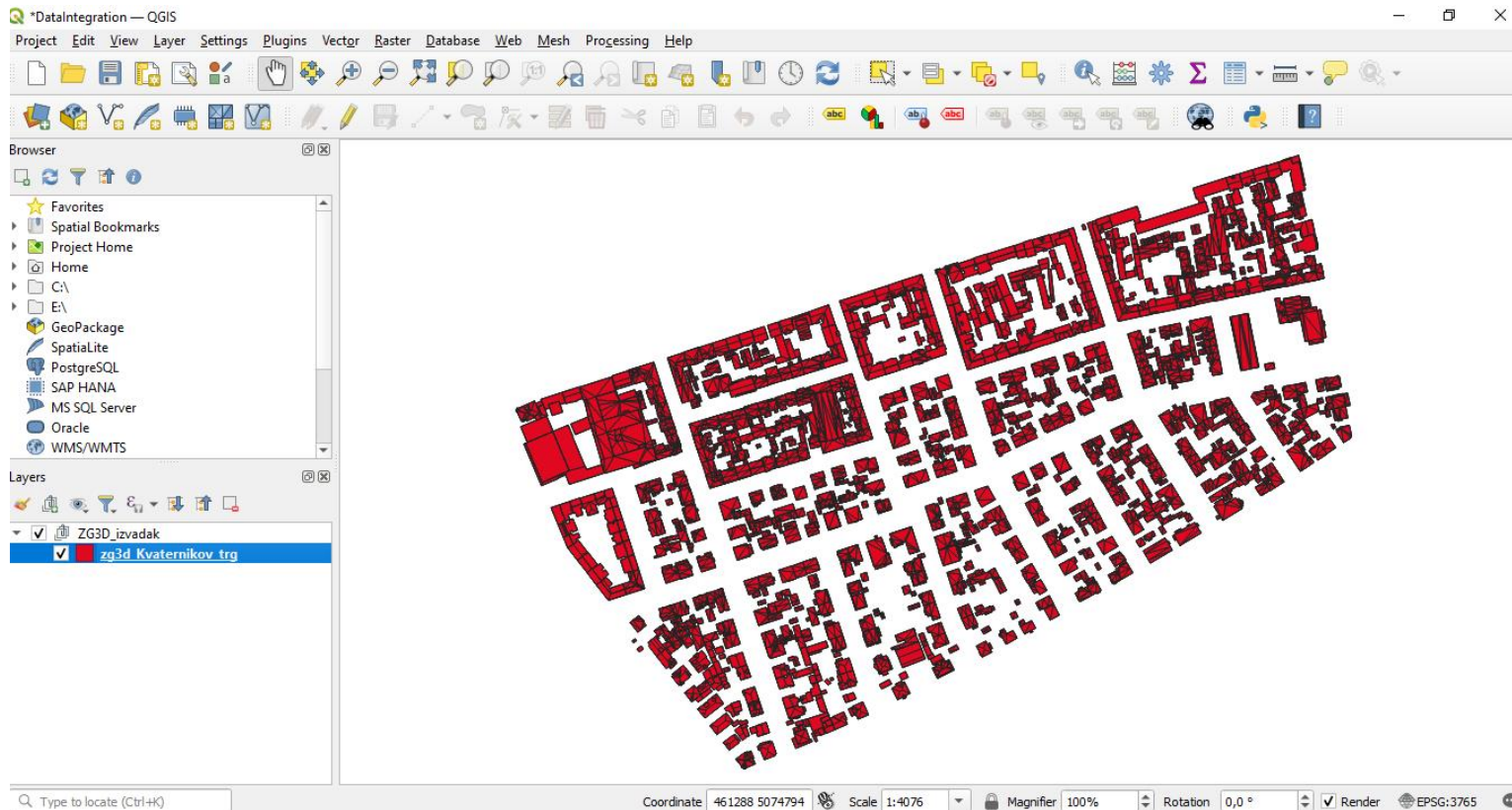
- Integracija podataka (QGIS)



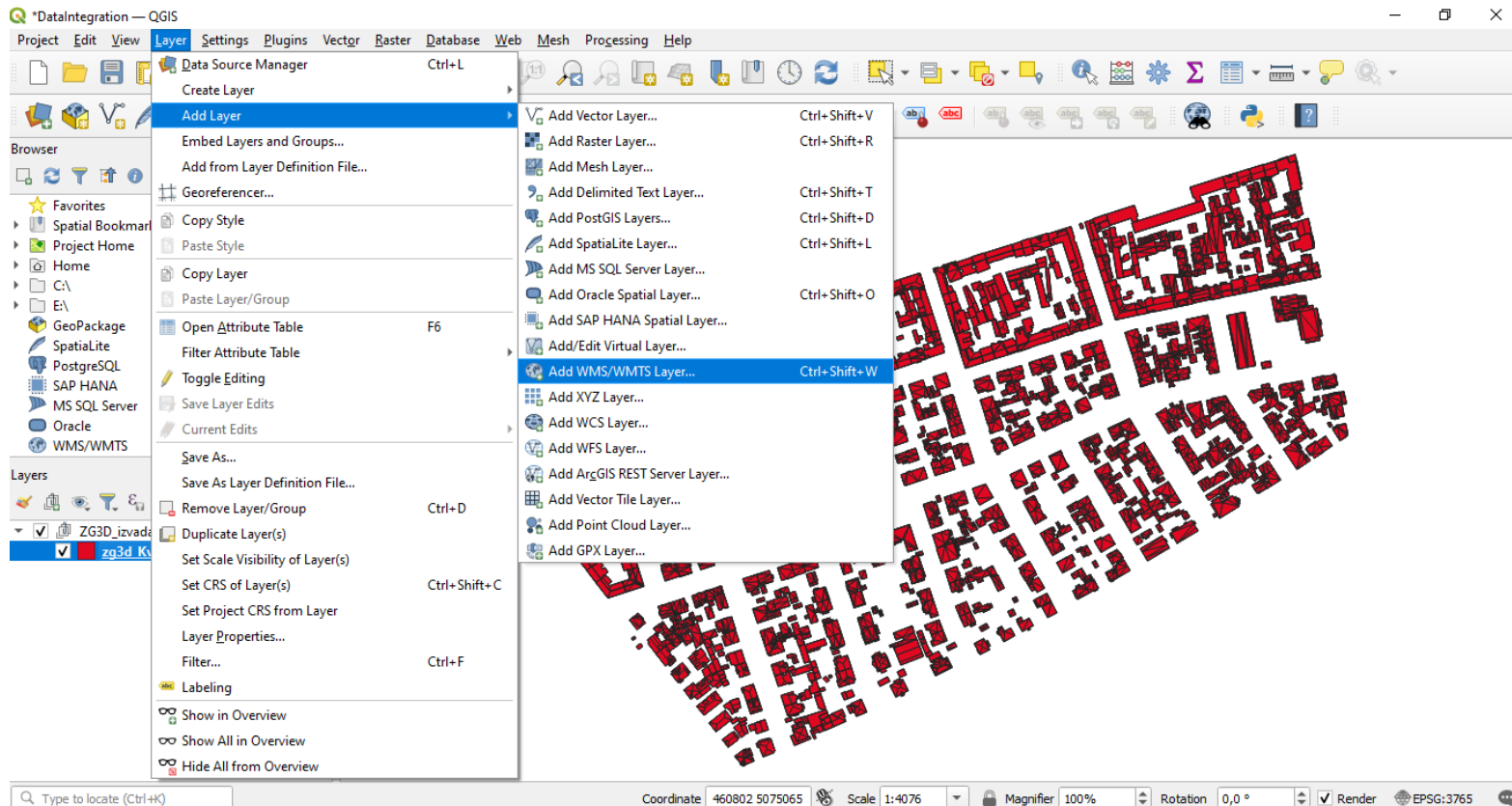
- Integracija podataka (QGIS)



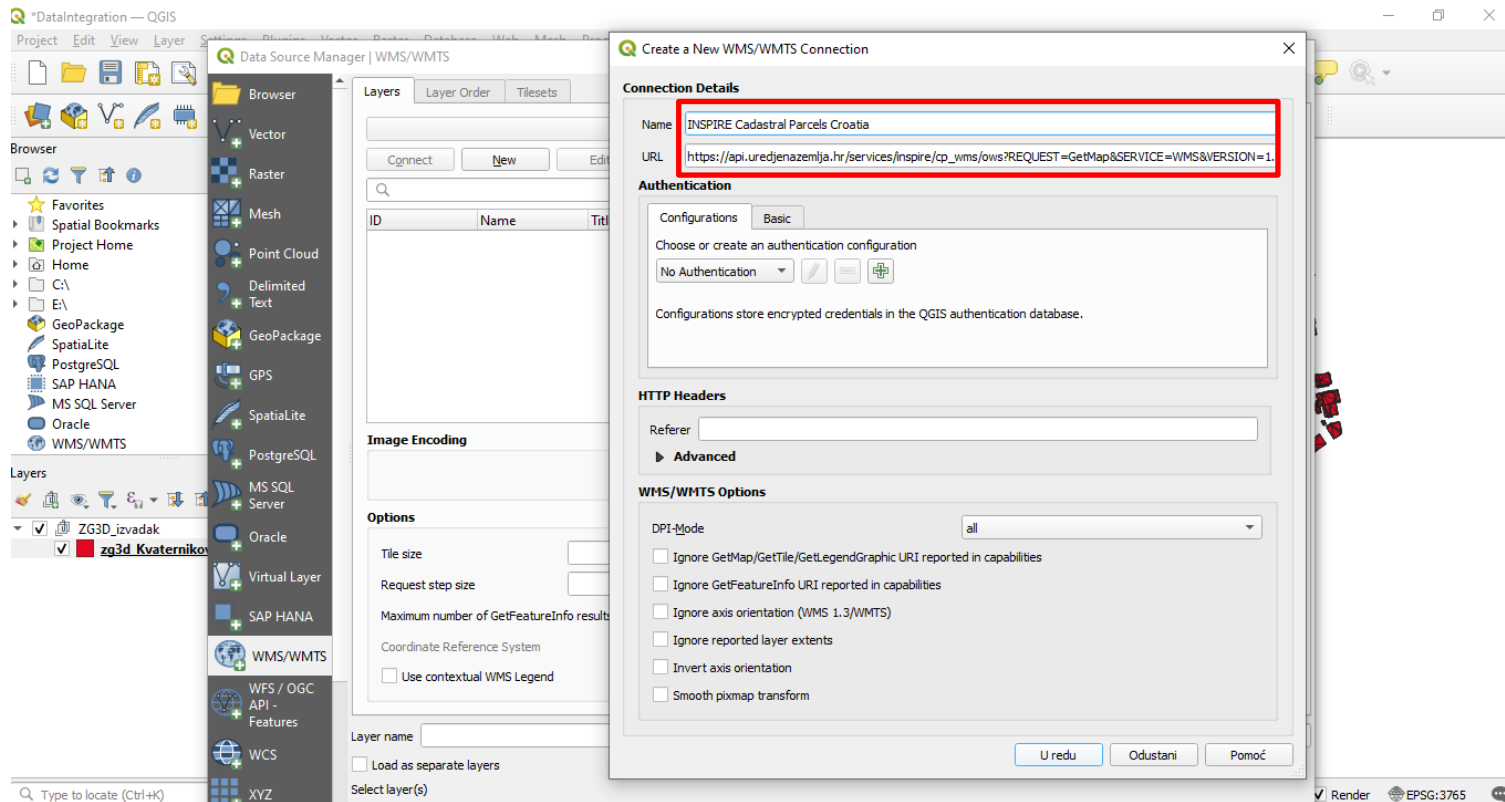
- Integracija podataka (QGIS)



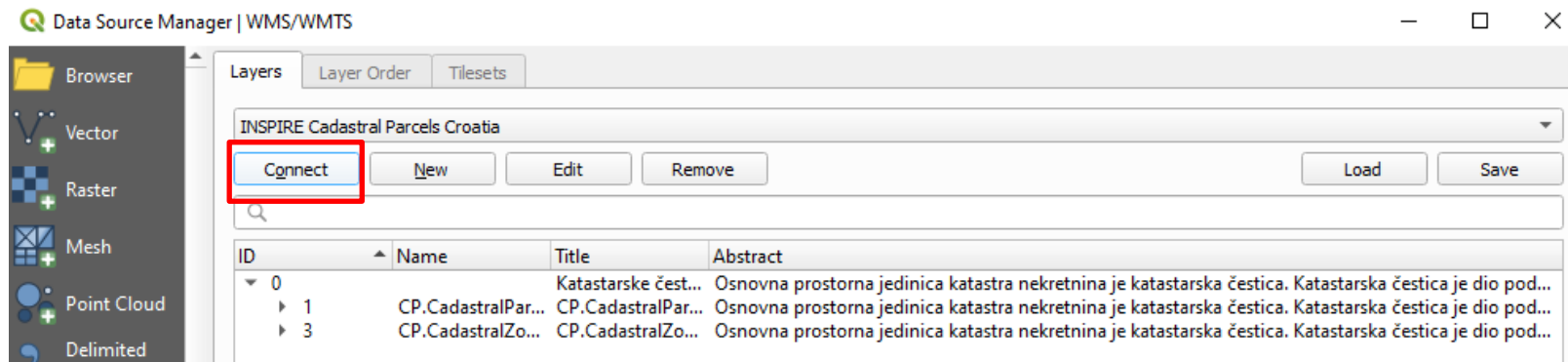
- Integracija podataka (QGIS)



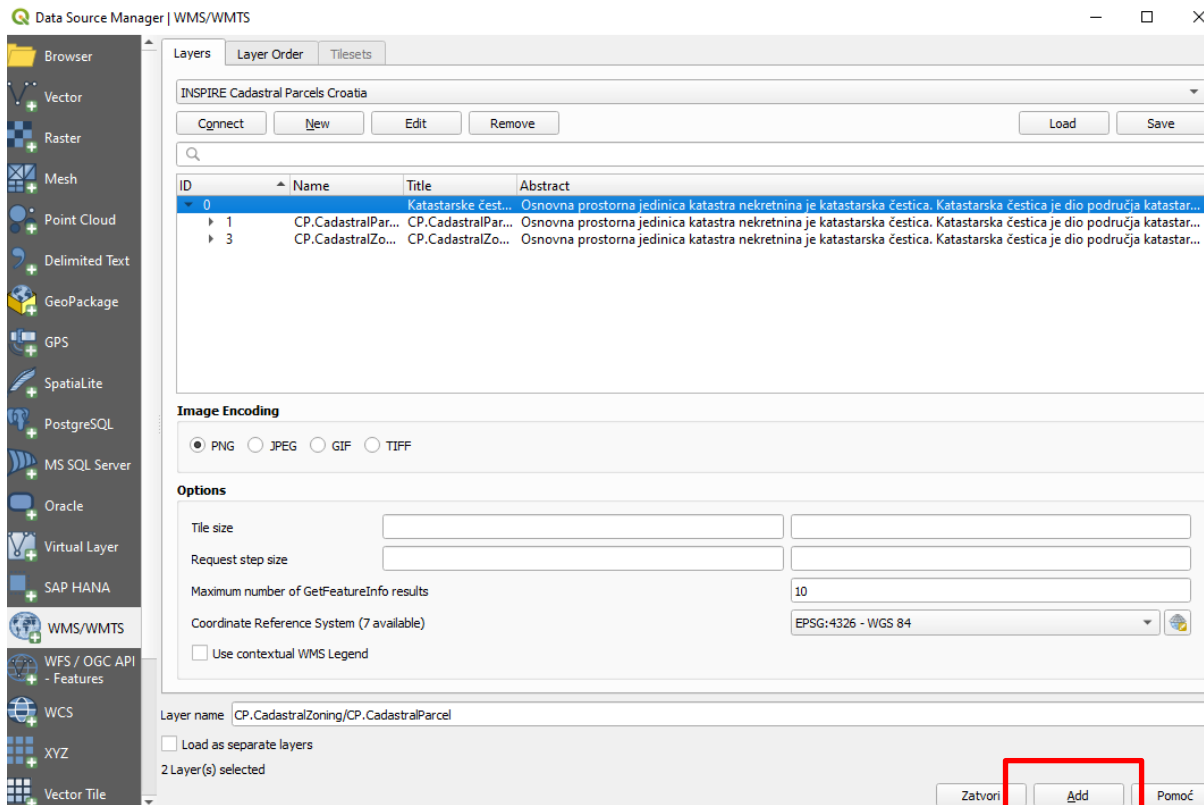
- Integracija podataka (QGIS)



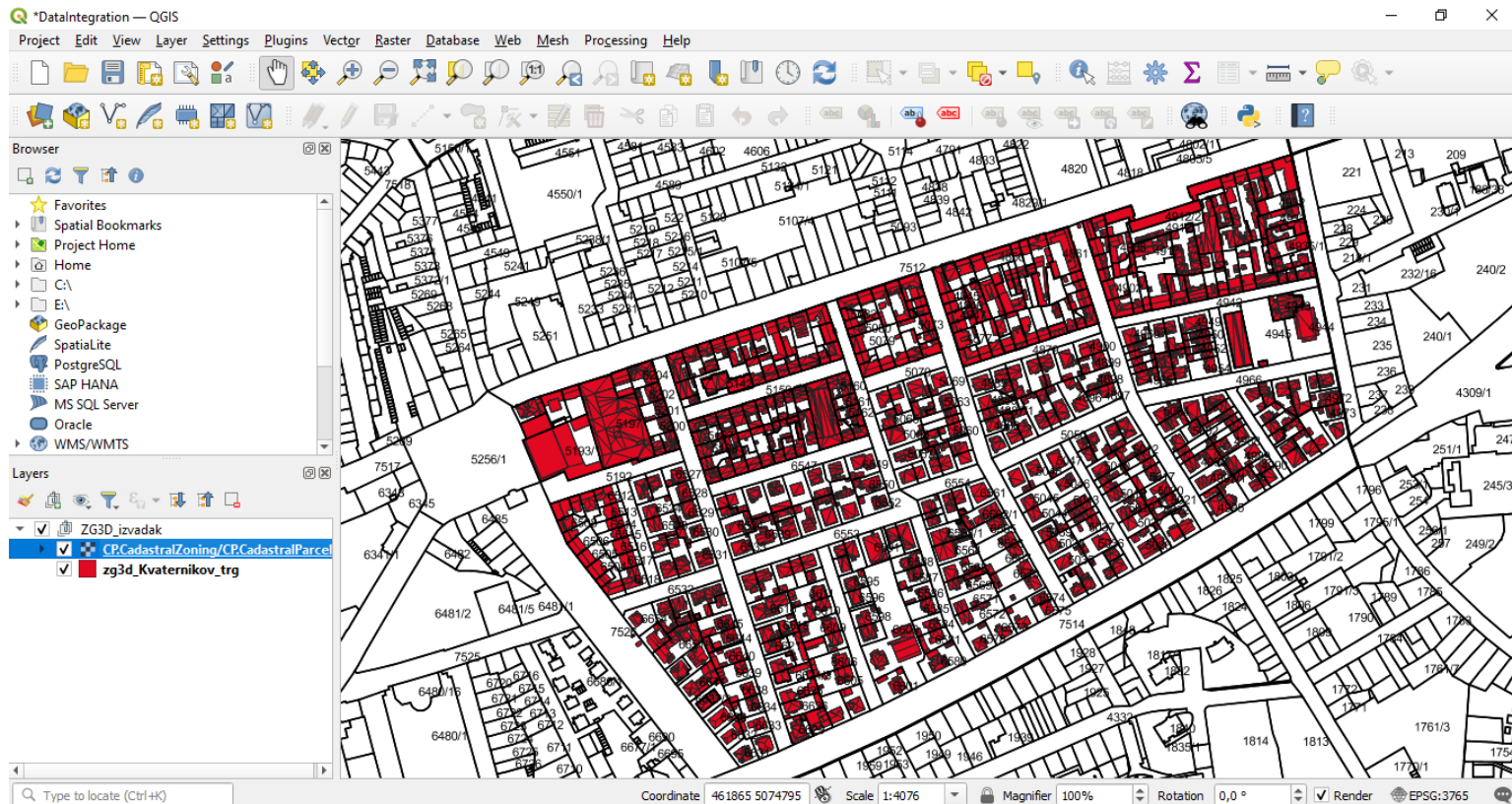
- Integracija podataka (QGIS)



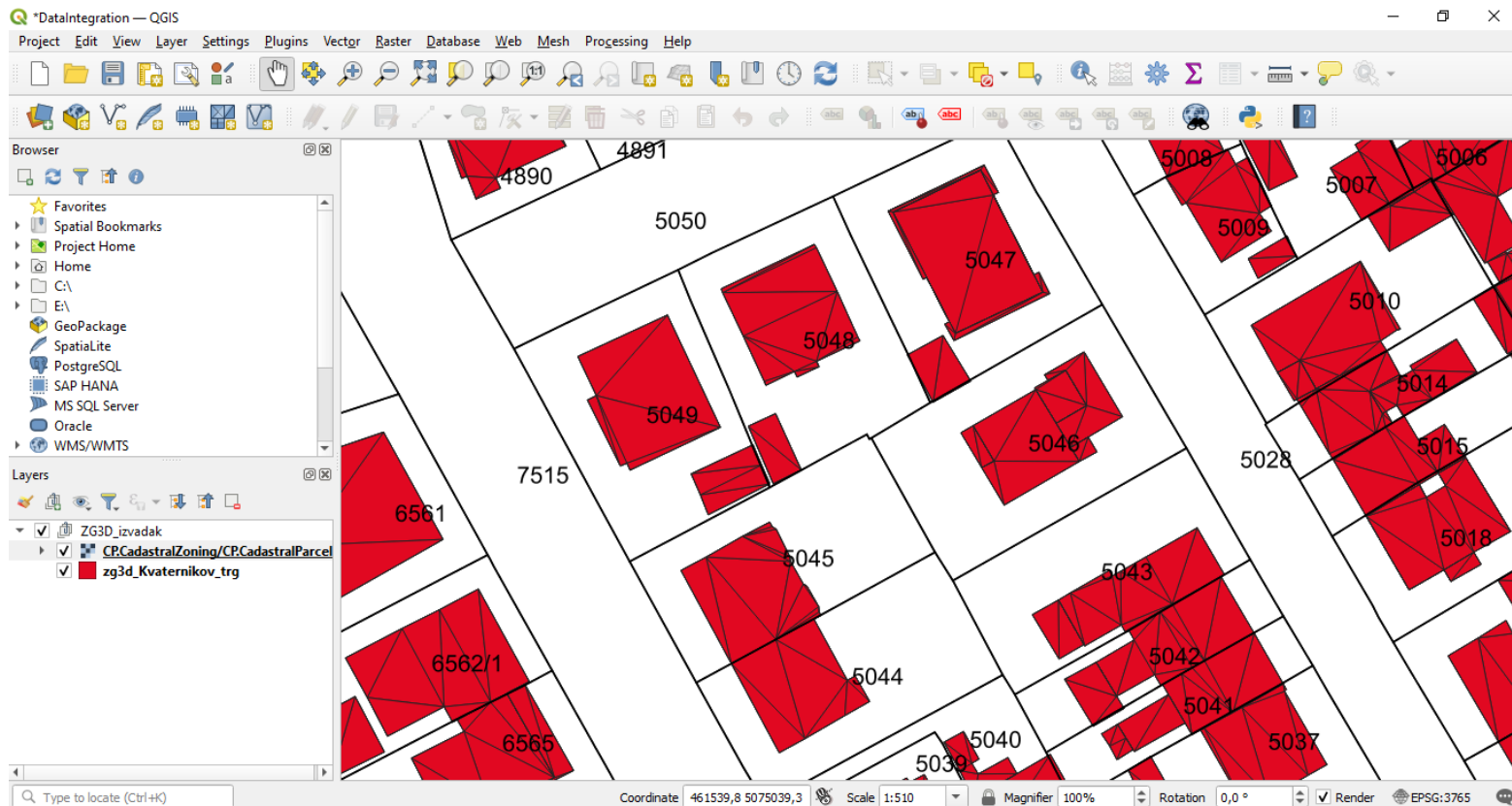
- Integracija podataka (QGIS)



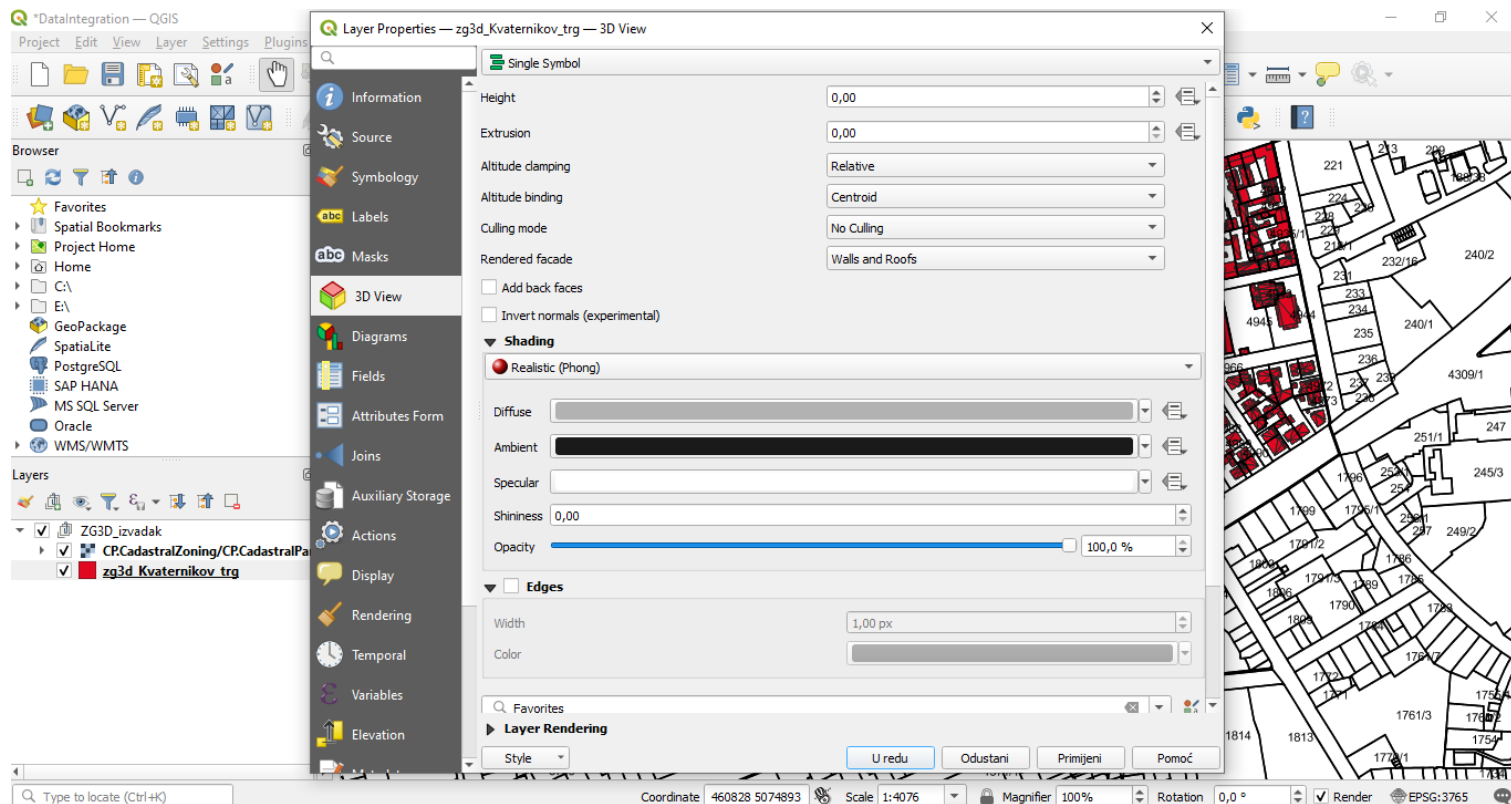
- Integracija podataka (QGIS)



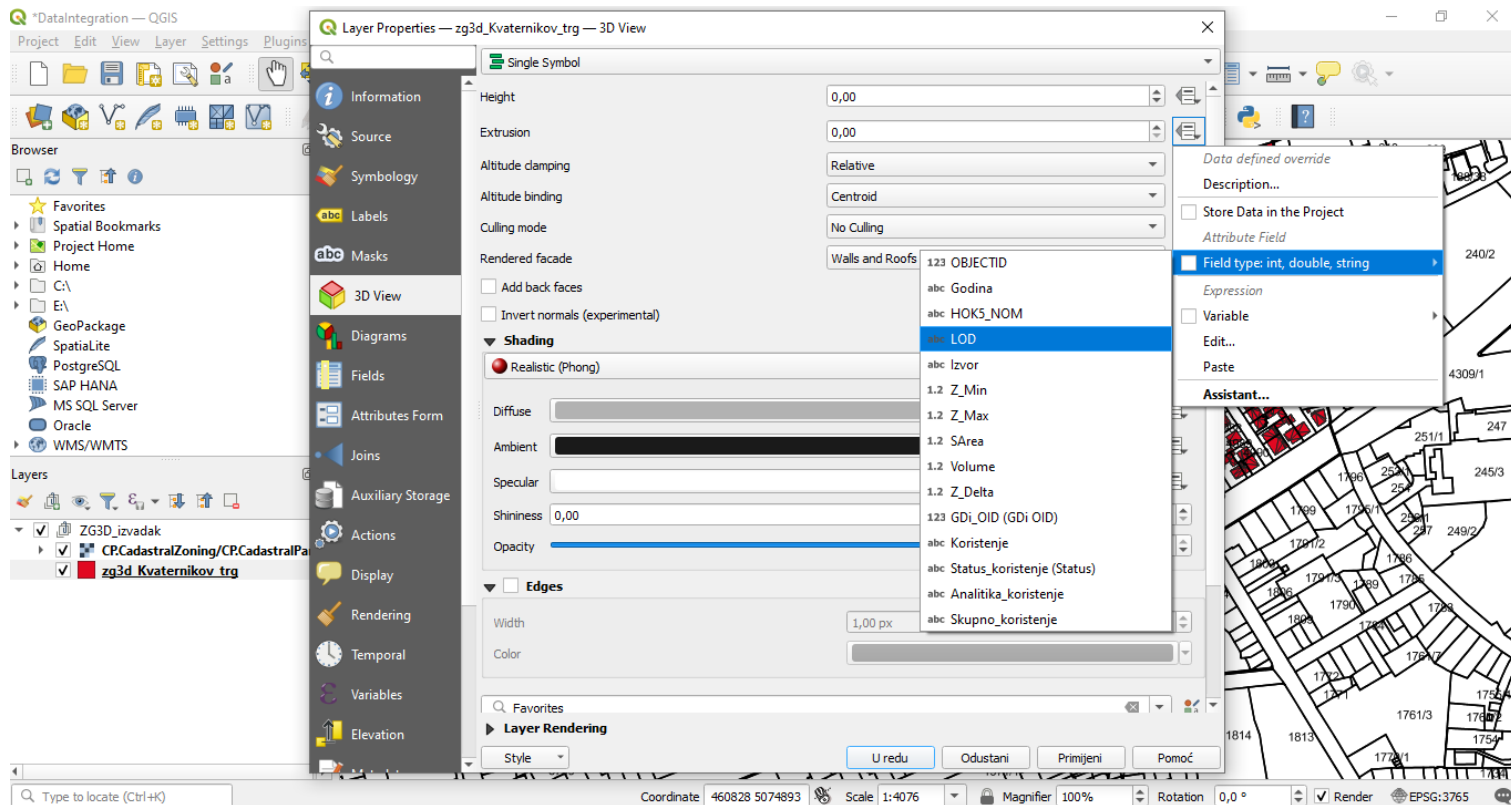
- Integracija podataka (QGIS)



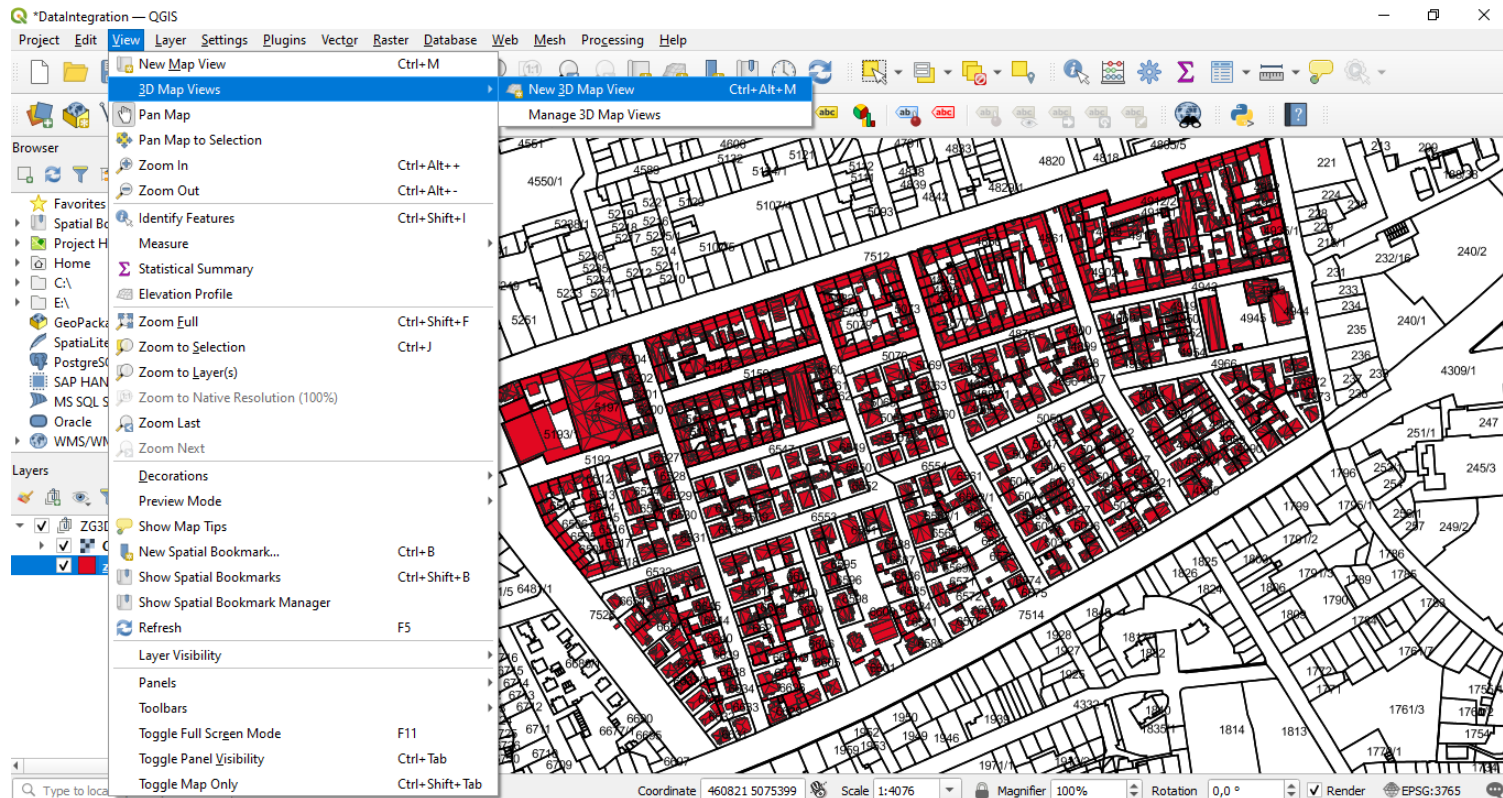
- Integracija podataka (QGIS)



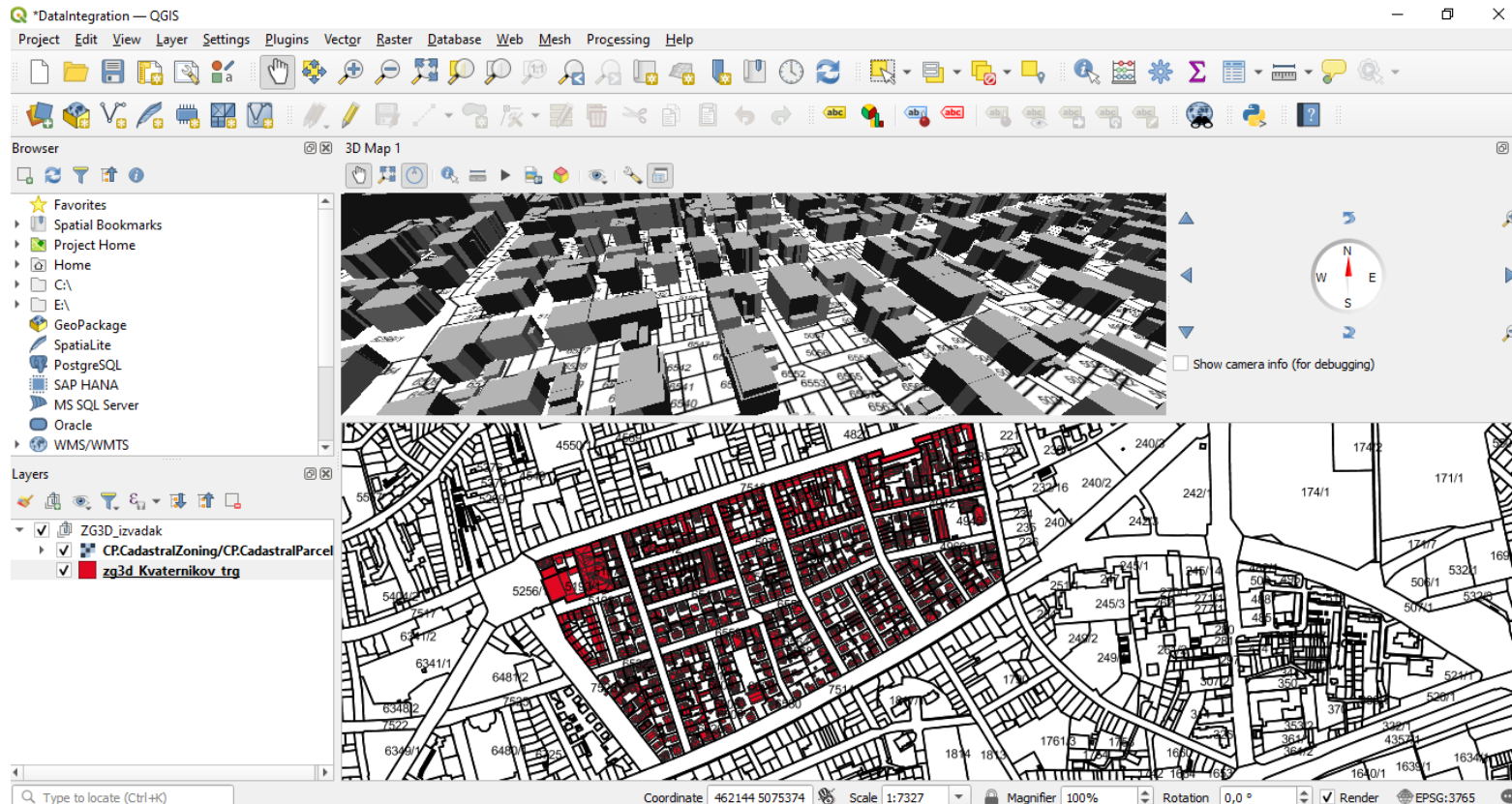
- Integracija podataka (QGIS)



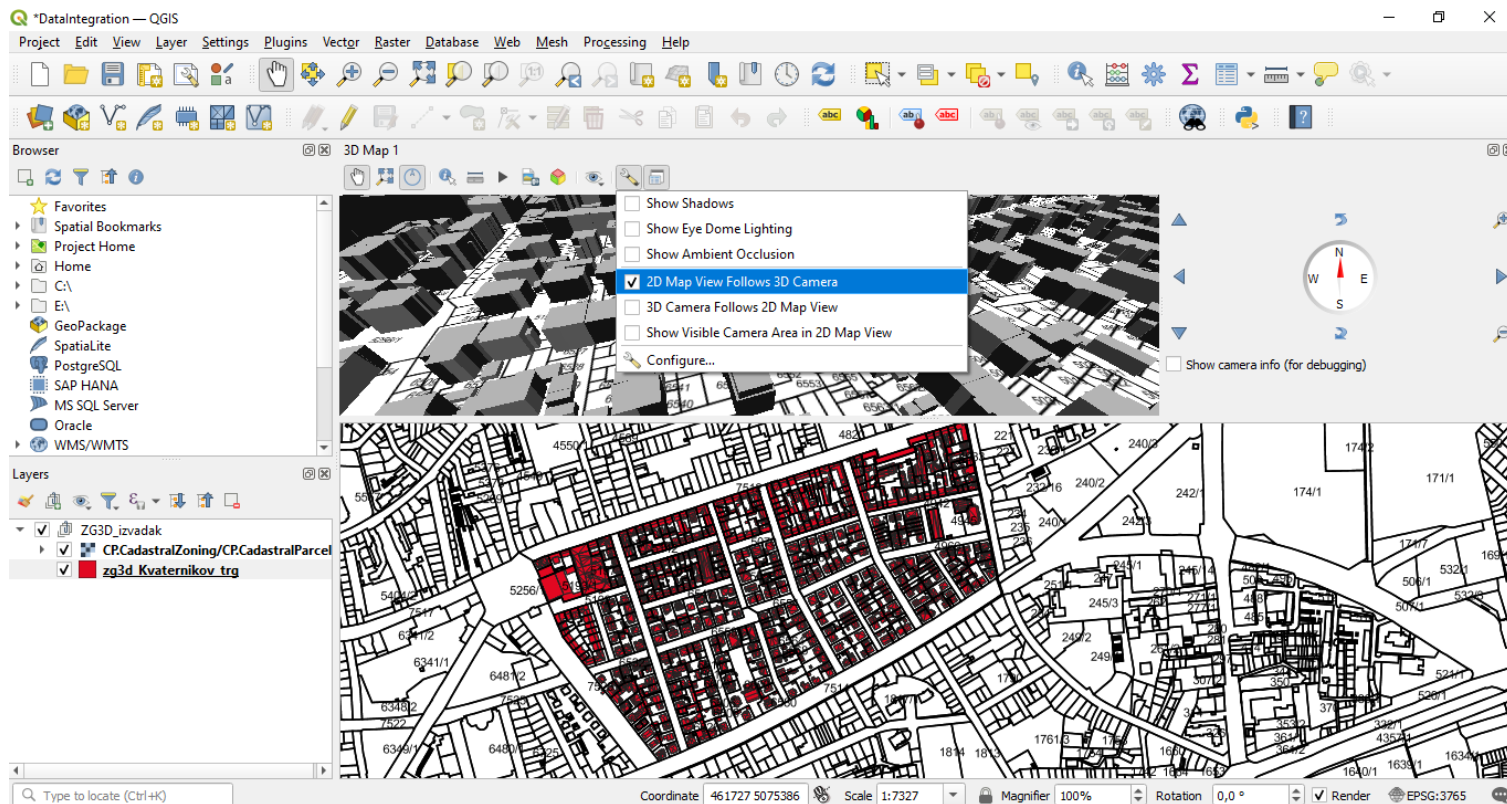
- Integracija podataka (QGIS)



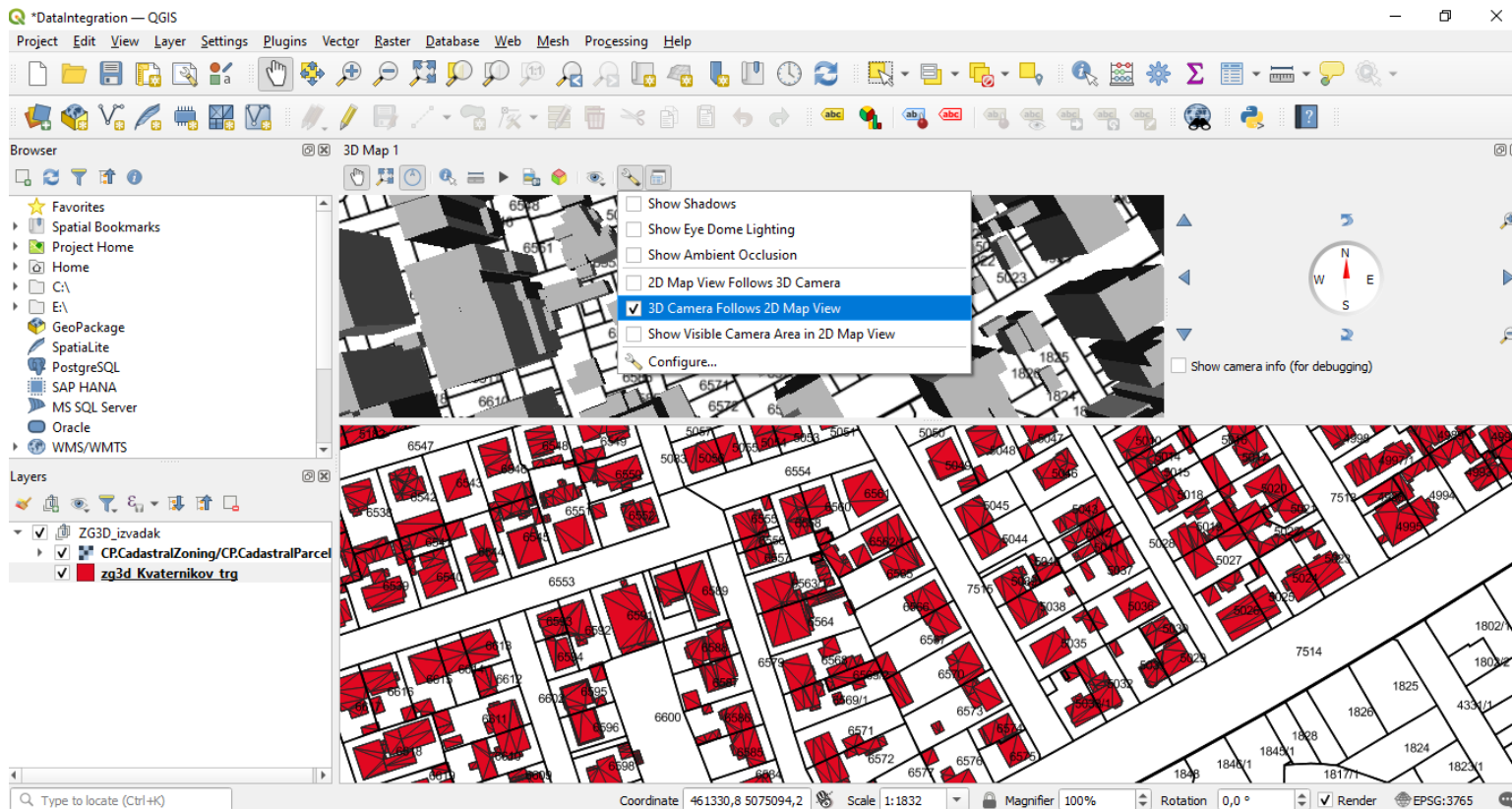
- Integracija podataka (QGIS)



- Integracija podataka (QGIS)



- Integracija podataka (QGIS)



- <https://inspire-geoportal.ec.europa.eu/srv/eng/catalog.search#/home>
- <https://qgis.org/en/site/>
- https://www.mdpi.com/2072-4292/7/6/6710https://arheologijaslovenija.blogspot.com/p/blog-page_81.html

Hvala na pažnji



<https://birgitproject.eu/>

Financirano sredstvima Europske unije. Izneseni stavovi i mišljenja su stavovi i mišljenja autora i ne moraju se podudarati sa stavovima i mišljenjima Europske unije ili Europske izvršne agencije za obrazovanje i kulturu (EACEA). Ni Europska unija ni EACEA ne mogu se smatrati odgovornima za njih.